

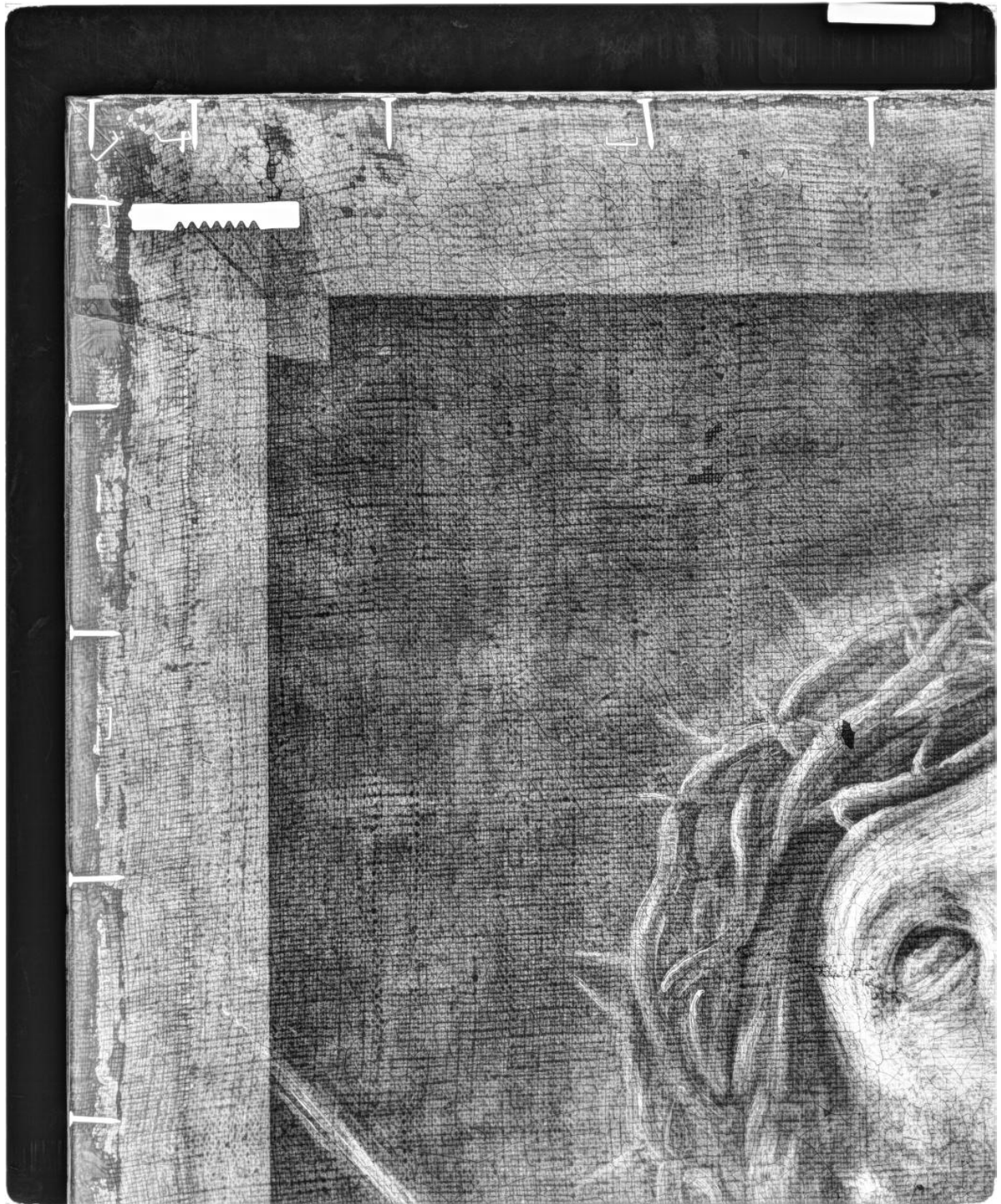
Name	JESUS CHRIST WITH A CROWN OF THORNS OR ECCE HOMO
Author/ Attribution	Unknown author (Initial attributed to Guido Reni)
Technique	Oil on canavas / Easel painting
Beneficiary	Municipal Museum of Bucharest (MMB)
Analysis	<ul style="list-style-type: none"> - XRF (X-ray Fluorescence) with portable TRACER III-SD, anticathode Rh, 40 kV, 11 μA, 10 s time of analysis - FTIR (Fourier Transform Infrared Spectroscopy), ATR mode, spectral domain 4000-450 cm^{-1}, resolution 4 cm^{-1} - Multispectral analysis (ARTIST) UV-VIS-NIR (365-1100 nm) - Hyperspectral analysis (SWIR), Hyspex 384 with 30 cm lens (950-2550 nm) - High-Resolution Digital X-ray ISOVOLT Mobile 160, Parameters 30kV, 60 s, 5 mA - Optical Microscopy

For the full report please contact

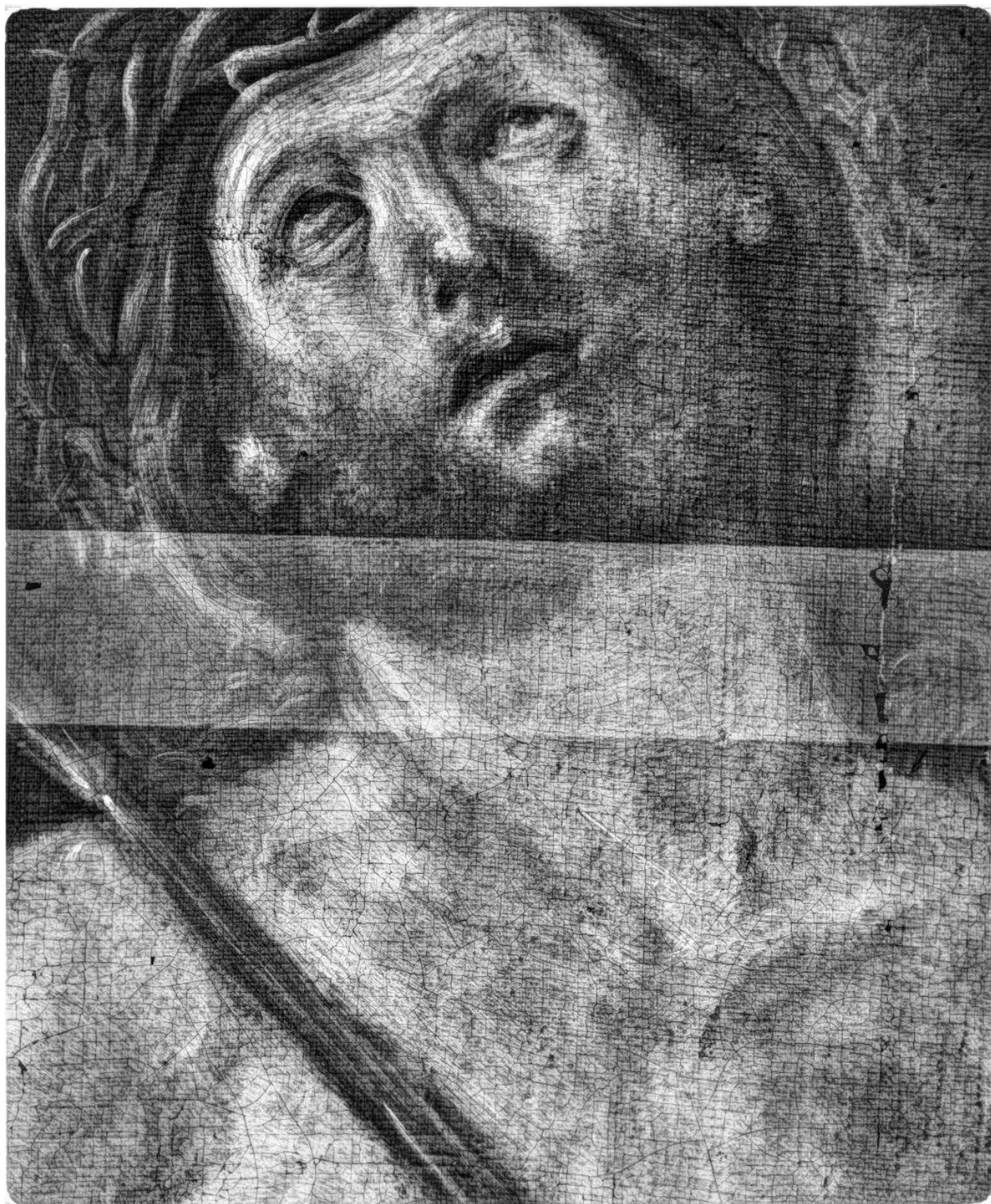
certo@inoe.ro



Visible color



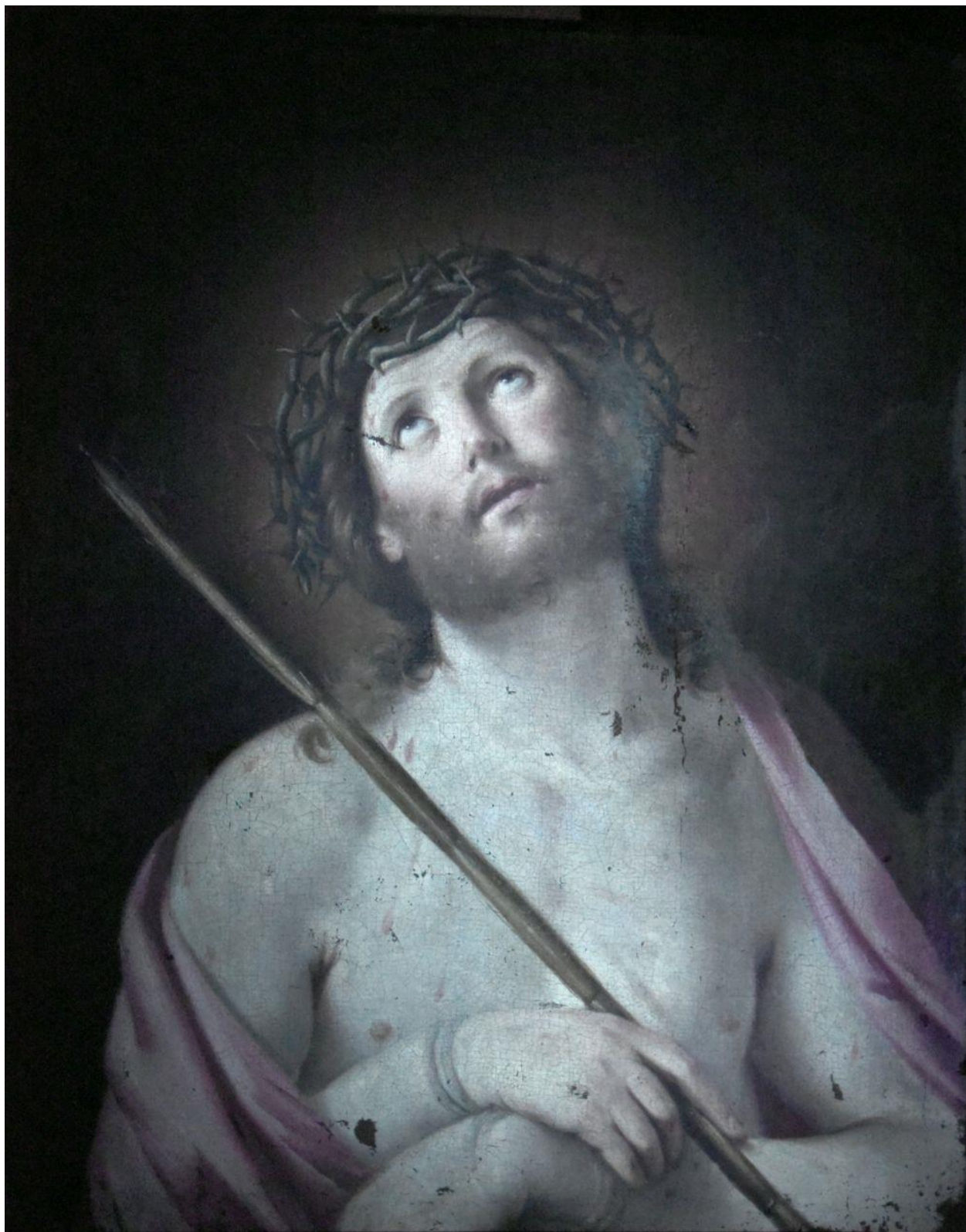
Digital X-ray. Detail-1



Digital X-ray. Detail-2



Digital X-ray. Detail-3

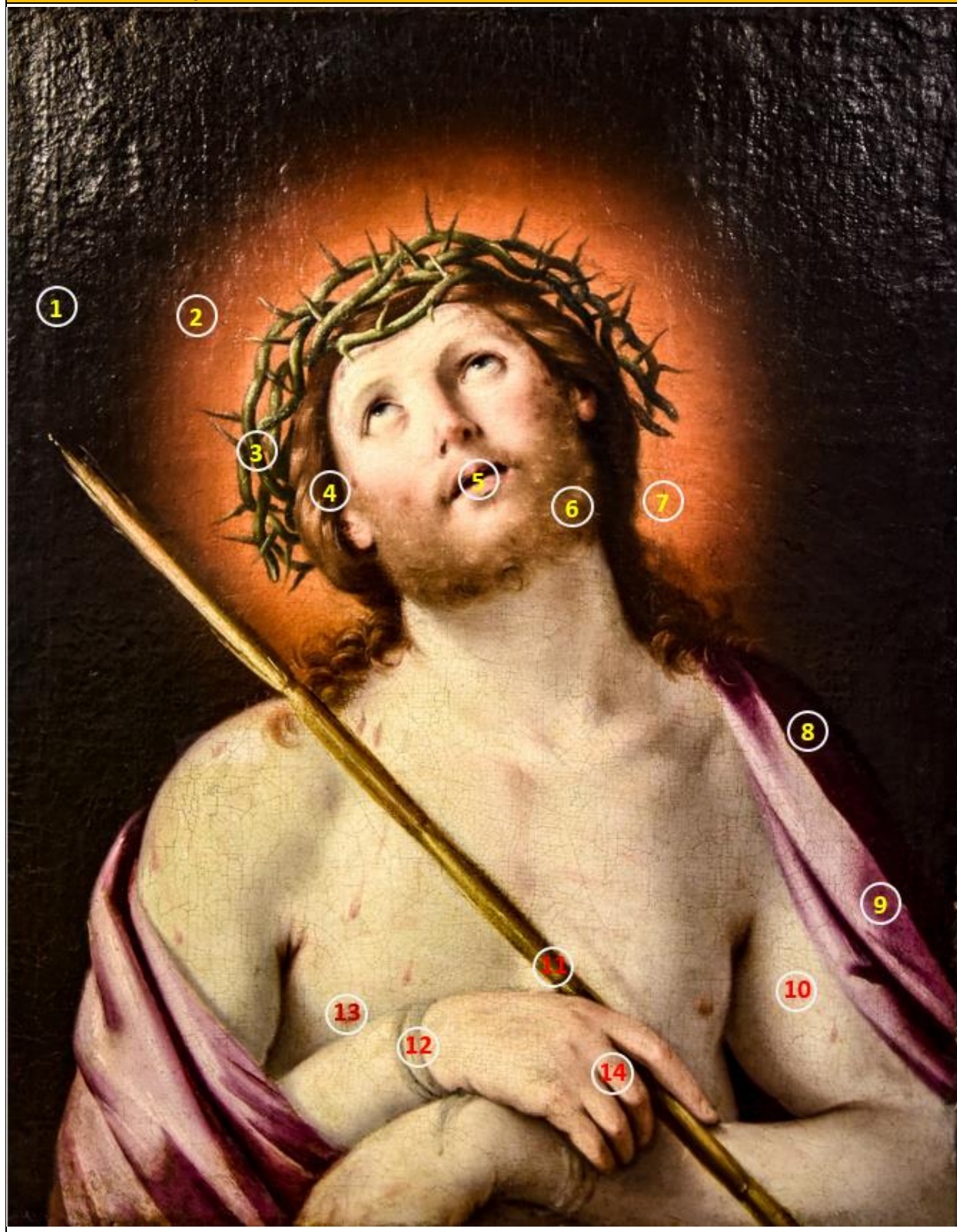


UV fluorescence



2000 nm

XRF. Points of analysis



Preliminary results

1	Pb, Fe, Ca, Mn	8	Pb, Fe
2	Pb, Hg, Fe, Ca	9	Pb
3	Pb, Fe, Hg, Ca	10	Pb
4	Pb, Fe, Mn, Ca	11	Pb, Fe, Ca
5	Pb, Fe	12	Pb
6	Pb, Fe	13	Pb
7	Pb, Hg, Fe, Ca	14	Pb

